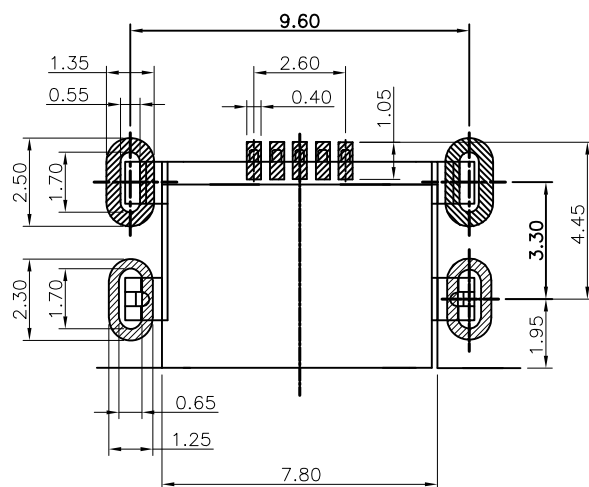
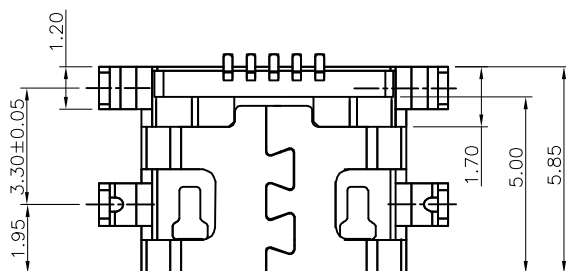
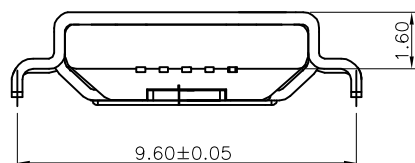
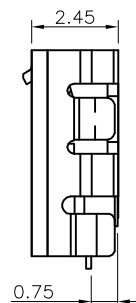
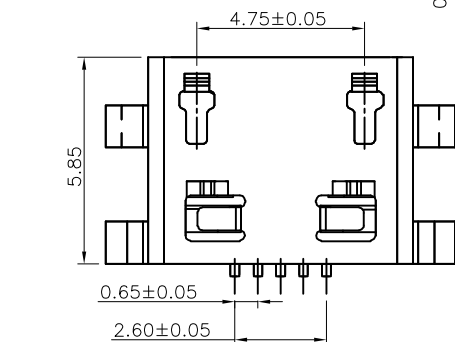
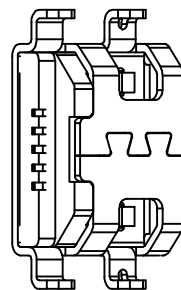
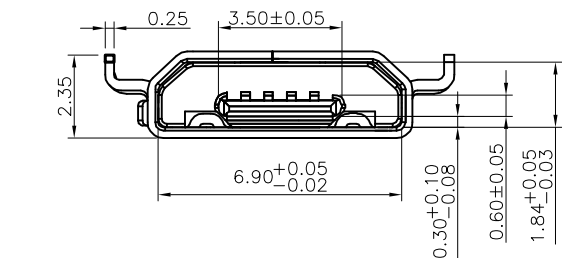


REV.	DESCRIPTION	DATE
A	RELEASE	Jan 3, 2020



RECOMMEND PCB LAYOUT
TOLERANCE: ±0.05
TOP VIEW

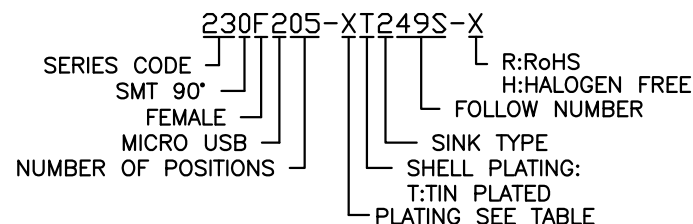
MATERIALS

- HOUSING : THERMOPLASTIC (UL 94V-0) LCP BLACK.
- TERMINAL : COPPER ALLOY,PLATING SEE TABLE.
- SHELL : COPPER ALLOY .
PLATING : NICKEL PLATED OVERALL.

SPECIFICATION

- CURRENT RATING : 1.8 A. MAX.
- DIELECTRIC WITHSTANDING VOLTAGE :
300V AC R.M.S. FOR 1 MINUTE.
- INSULATION RESISTANCE : 1000MΩ MIN.AT 500V DC.
- CONTACT RESISTANCE : 30mΩ MAX.
- OPERATING TEMPERATURE : -25°C TO +85°C.

PART NUMBER INFORMATION :



DESCRIPTION OF PLATING ON TERMINALS			
NO.	EXPLAIN	NO.	EXPLAIN
0	GOLD FLASH	3	GOLD 15u"
1	GOLD 5u"	4	GOLD 20u"
2	GOLD 10u"	H	G/F + TIN

TOLERANCE .0=±0.25 .00=±0.15 .000=±0.05 ANG.=±3°	DRAWER <i>Momo</i> CHECK APP'D	<p>INMO</p> <p>东莞市英墨电子有限公司 INMO Electronics Co.,Ltd</p> <p>NAME MICRO USB 5P/P 沉板 0.8 直边</p> <p>DRAW NO. R230F205-XT249S-X</p>	
UNITS : mm	PRODUCT SPEC. —		
SCALE NONE	SIZE A4	SHEET 1 OF 1	REV. A